

# MONTHLY MEMBERSHIP PROGRESS REPORT

District N 1

Results as of: 4/30/2024

GMT:

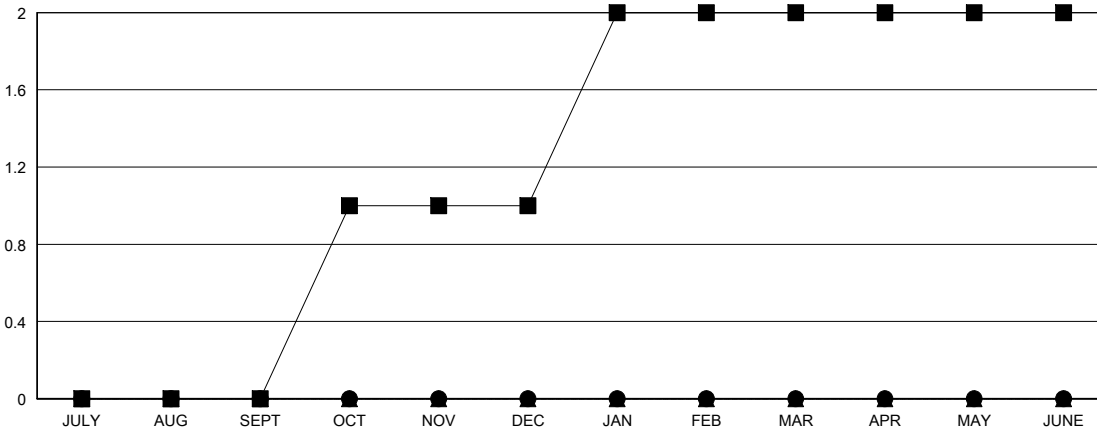
LOCATION PRINCE EDWARD ISLAND

GMT CA

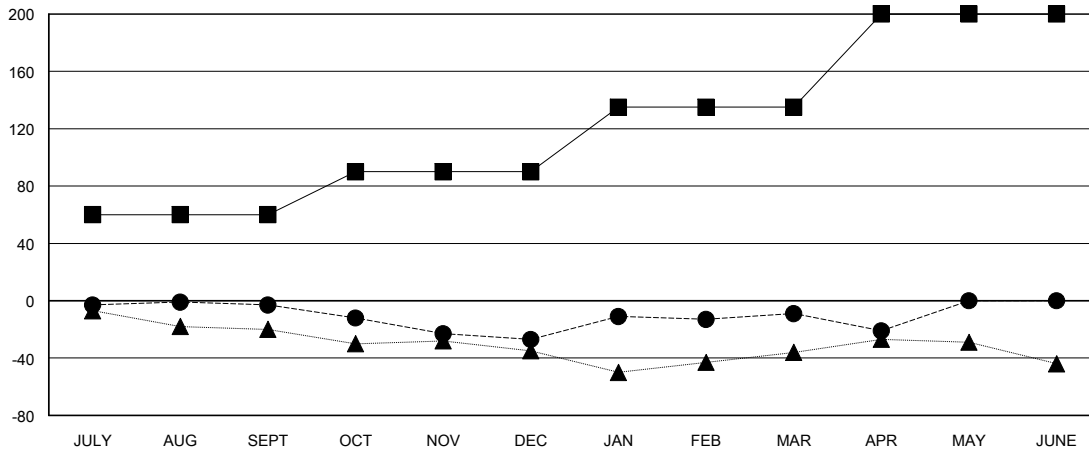
Clubs			
RESULTS FOR 2023-2024			
QUARTER	NEW CLUB GOAL	NEW CLUBS	DROPPED CLUBS
JULY/AUG/SEPT	0	0	1
OCT/NOV/DEC	1	0	0
JAN/FEB/MAR	1	0	0
APR/MAY/JUNE	0	0	0

Members			
RESULTS FOR 2023-2024			
QUARTER	MEMBER GROWTH NET GOAL	MEMBER GROWTH ACTUAL	DROPPED MEMBERS ACTUAL (including transfers)
JULY/AUG/SEPT	60	27	28
OCT/NOV/DEC	30	25	46
JAN/FEB/MAR	45	79	55
APR/MAY/JUNE	65	9	19

GOALS AND ACTUAL NEW CLUBS CUMULATIVE



GOALS AND ACTUAL MEMBERS CUMULATIVE



<b>DROPPED CLUBS: 1</b>	41 CLUBS OF 74 ADDED 1 OR MORE NEW MEMBERS	<b>GENDER DISTRIBUTION</b>	
		MALE 1,092 (70.36%)	FEMALE 459 (29.57%)
<b>DROPPED MEMBERS</b>		<a href="#">CLICK HERE FOR CUMULATIVE MEMBERSHIP DATA</a>	TOTAL FAMILY UNIT MEMBERS 268
DECEASED 23	CLUB CANCELLED 0		FAMILY MEMBERS PAYING HALF DUES 136
OTHER 125	TOTAL 148		